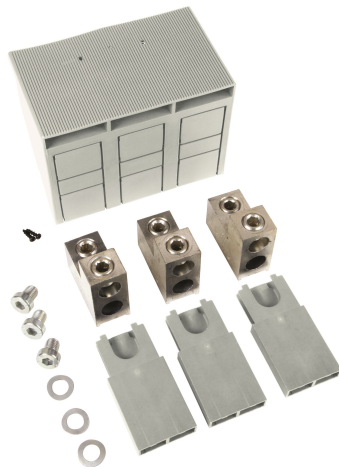


# Rockwell Automation

## 140G Molded Case Circuit Breaker Accessories

[140G-K-TLC23](#)



*Representative Rendering, Not The Actual Product*

Frame-K, Terminal Lug, Qty 3, FCCu 2x2/0-250(95-120)

### Product Details

Circuit Breaker Data	
Bulletin Number	Bulletin 140G/140MG
Pole Configuration	3 Poles
Accessories	
Terminal Lugs	Frame-K, Terminal Lug, Qty 3, FCCu 2x2/0-250(95-120)

### Supporting Documentation and Downloads

- [Photo](#)
- [Link to Literature Library for Installation Instructions](#)
- [140G Specifications and Technical Data](#)
- [Breaker Wars: MCCB vs MPCB vs MCP vs MCB Podcast](#)